



USER MANUAL

He makes his home where the living is
best.

- Latin Proverb

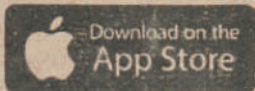
SOMA TILT INSTALLATION

Before installing and using this product, please read the installation guide carefully.

!!! IMPORTANT !!!

Please charge the battery using the USB cable provided in the pack and a regular phone charger. We ship out the devices with up to 15% charge due to IATA policy regarding lithium batteries.

1



Download the mobile app by scanning QR code from package. Alternatively, search for "Smart Shades" in Google Play or Apple App Store.



Open your phone settings and make sure you have Bluetooth connection enabled. Open Smart Shades app.



To activate SOMA Tilt, plug a USB cable into a regular phone charger. You will hear a three tone sound. After that, your SOMA Tilt is ready to be paired with your mobile phone. You can remove the charger and continue the setup.



Open the Smart Shades app and hold your smartphone next to an activated SOMA Tilt. Wait until your device discovers the SOMA Tilt.

5



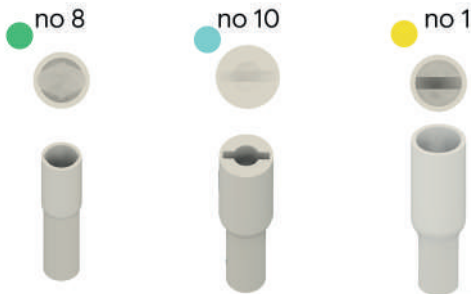
First, manually tilt your blinds to an open position (this is important for the configuration step later) and then remove the wand.

6

Connectors

How to choose & Identify

SOMA Tilt comes with 3 types of connector plugs:



Connector plug nr 10 is by default attached to the SOMA Tilt Flex Cable.

Choose the right connector plug to match your blinds wand hook.



Connector no 10

Used by many brands: Basic Blindz, Custom Size

Now by

Levolor, Home Depot, JCPenny, Lowes

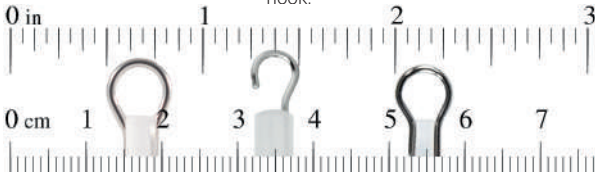


How to replace:



1. Make sure to align the wand hook correctly with the connector plug
2. Make sure the hook is deeply and securely pushed in, it should cover the hook and the body as shown

Suitable for blinds which use metal wand hook and slim plastic body. Use the reference scale below to measure and identify the hook.



Connector no 8

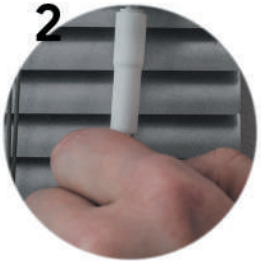
Used by many brands: Basic Blindz, Custom Size

Now by

Levolor, Home Depot, JCPenny, Lowes



How to replace:



1. Make sure to align the wand hook correctly with the connector plug.
2. Make sure the hook is deeply and securely pushed in, it should cover the hook and the body as shown.

Suitable for blinds which have full plastic body hook. Use the reference scale below to measure and identify the hook.



Connector no 1

Used by many brands:Basic Blindz, Custom Size

Now by

Levolor, Home Depot, JCPenny, Lowes



How to replace:



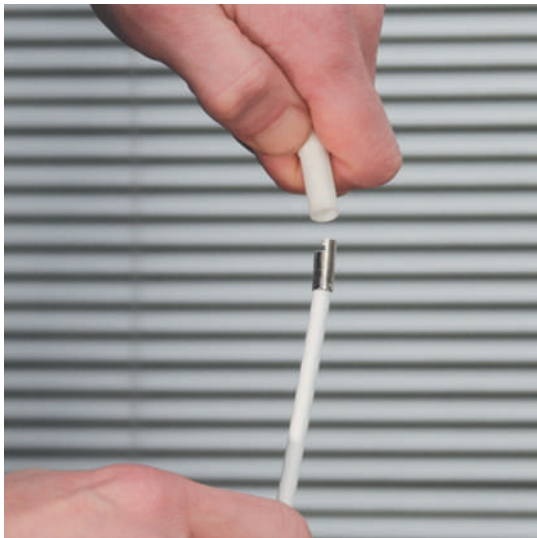
1. Make sure to align the wand hook correctly with the connector plug

2. Make sure the hook is deeply and securely pushed in, it should cover the hook and the body as shown

Suitable for blinds which have a thick metal hook and full plastic body.



Changing end plug connectors - remove



Connector plugs can be changed by pulling them off of the SOMA Tilt flex cable.

Hold the tilt flex cable with one hand and pull off the connector plug.

Changing end plug connectors - attach



Choose the correct connector plug and attach it to the SOMA Tilt flex cable. Make sure little or no metal body is seen to ensure the best fit.

7



Push the flex cable with attached connector plug firmly over the wand hook.

Make sure to use the right connector plug -
Use the chart on page 6 to find the right option.



Peel off the the protective film from the tape and attach the SOMA Tilt to the wall.

SOMA Tilt can be placed outside or inside a window frame or directly on a frame. See more on placement options on page 14.

Placement options



You can place SOMA Tilt outside a window frame.



Alternatively, you can place the SOMA Tilt inside a window frame.

9



Attach The SOMA Tilt to your preferred location. Use the tape on the back of the device to securely mount it on the wall.

Placement options



Make sure the cable is not twisted too much as this will cause the device to malfunction in the long run, and your SOMA Tilt may not work properly or may be noisy.



Correctly attached cables let the SOMA Tilt
operate smoothly

For a more in-depth look at placement possibilities, please go
to the following URL:

<https://www.somasmarthome.com/pages/support>



Follow the on-screen instructions and complete the set-up.

CONGRATULATIONS!

INSTALLATION
COMPLETE!

WELCOME TO A
SMARTER HOME.

SOLAR PANEL INSTALLATION

Important:

The solar panel must always be installed indoors, directly against the glass so as to allow as much natural light as possible to reach the panel.

Make sure that all the solar cells are exposed to daylight.

1



Remove the protective film from the solar panel. Also, remove the protective film from the adhesive strip on the front of the panel.

2



Position the bezel with solar panel facing outdoors, then press it firmly against the glass for 5 seconds.

3



Firmly insert the charging plug into the socket. When inserted correctly, the plug has to make a clicking sound when pushed into the socket.

SOLAR PANEL
INSTALLATION
COMPLETE!

TROUBLESHOOTING

1

Device is not activating

We ship out devices with up to 15% charge due to IATA policy regarding lithium batteries.

* Please charge the battery using the USB cable provided in the pack and a regular phone charger.

* Make sure the charging plug is completely pushed into the device.

* Try turning the Bluetooth off and on again.

* Make sure that you are using the latest Smart Shades mobile app.

SAFETY

To avoid damaging the product read the instructions before using:

1. Never immerse the device or solar panel into any liquid.
2. Never drill holes into the device.
3. Do not drop the device or the solar panel.
4. Never pierce the solar panel or its bezel frame.
5. Never put anything onto the solar panel (risk of scratching or breakage), especially during installation.

6. Once installed, never subject the wire harness or other components to strain, pinching, or cutting caused by moving objects.
7. Do not eat the product or the solar panel.
8. THIS PRODUCT IS NOT A TOY. KEEP AWAY FROM CHILDREN. IT IS NOT SUITABLE FOR CHILDREN UNDER THE AGE OF 5, AS SMALL PARTS AND/OR BROKEN PARTS MAY PRESENT A CHOKING HAZARD. IF SWALLOWED, SEEK IMMEDIATE MEDICAL HELP

TECHNICAL DATA

Power

Rechargeable via solar panel or USB charger

Compatible devices

Android 4.3 or newer and iPhone or iPad iOS8 or newer

Operatio range

Up to 40m

Hereby, WAZOMBI LABS OÜ declares that the radio equipment type SOMA SMART TILT device is in compliance with Directive 2014/53/EU. The full text of the EU declaration of conformity is available at the following internet address:

www.somasmarthome.com/compliance

Technology

Bluetooth Low energy

Battery

Internal lithium battery, 1400mah



SOMA Smart Home warrants its motors, electrical and electronic accessories to be free from defects in material and workmanship under normal and proper use for a period of 1 year starting from the date of purchase.

EXCLUDED FROM WARRANTY: -If usage, adaptation or installation are not in accordance with our installation and operating instructions. -If the product has been opened, dismantled or returned with clear evidence of abuse or other damage. -If our written specifications are not properly applied by the Buyer when selecting the equipment. -If our written instructions for installation and wiring of the electrical connections have not been followed. -If our equipment has been used to perform functions other than the functions it was designed to handle, namely motorizing window and door enclosures e.g. shades, rolling shutters, awnings and projection screens which subject the SOMA Smart Home equipment to conditions which exceed its rated capacity. Please consult SOMA Smart Home about warranty for any uses other than that above.

SOMA Smart Home's only obligation shall be to repair or replace defective equipment which does not conform to the warranty. SOMA Smart Home shall not be liable for any injury, loss or damage, direct or consequential, arising out of, or the inability to use, the equipment. Before using, Buyer and/or the ultimate User shall determine the suitability of the product for its intended use, and User assumes all risks and liability in connection therewith.

SUPPORT

For support please contact our team

www.somasmarthome.com/pages/support

or

support@somasmarthome.com

Simple. Smart. Intelligent.

